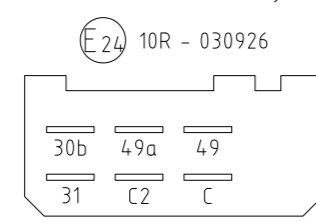
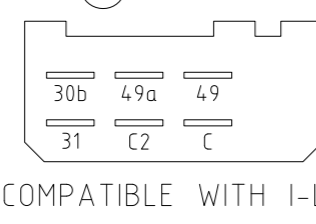
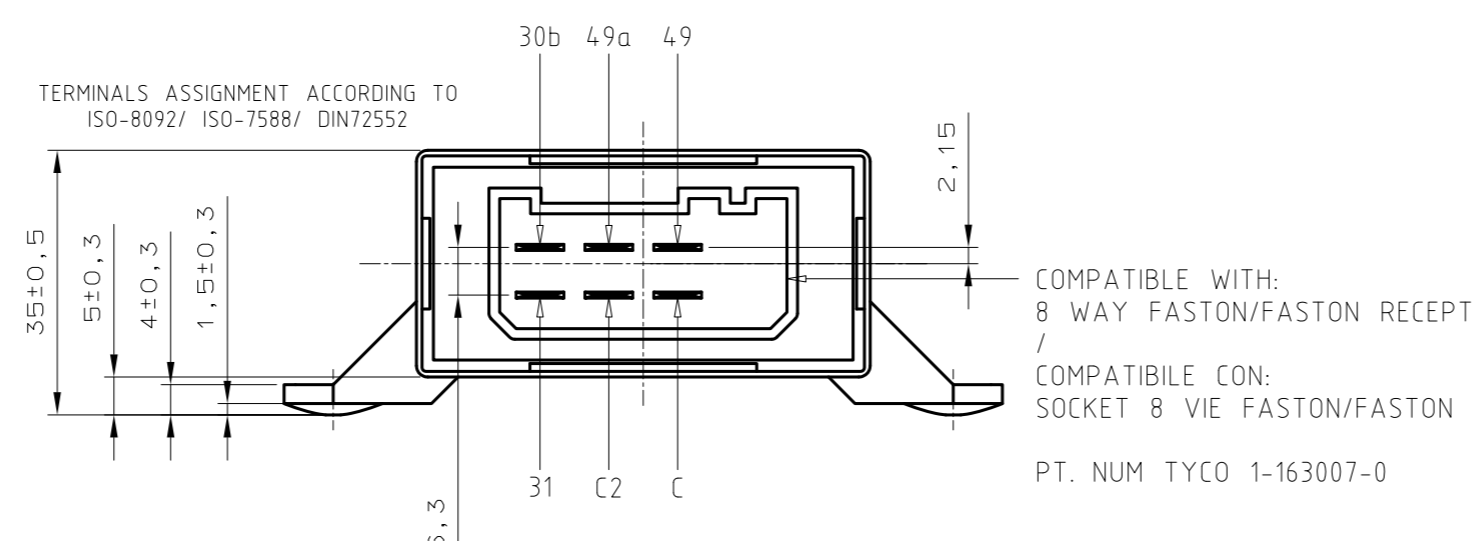
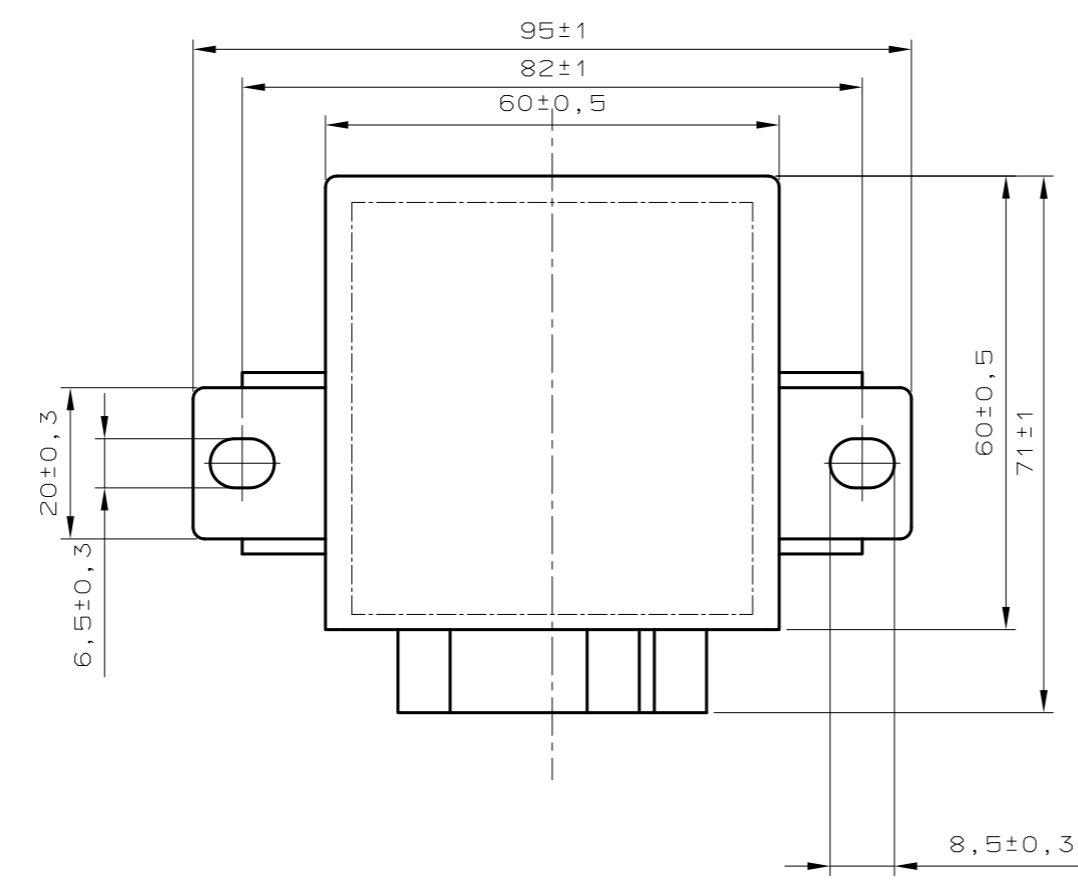
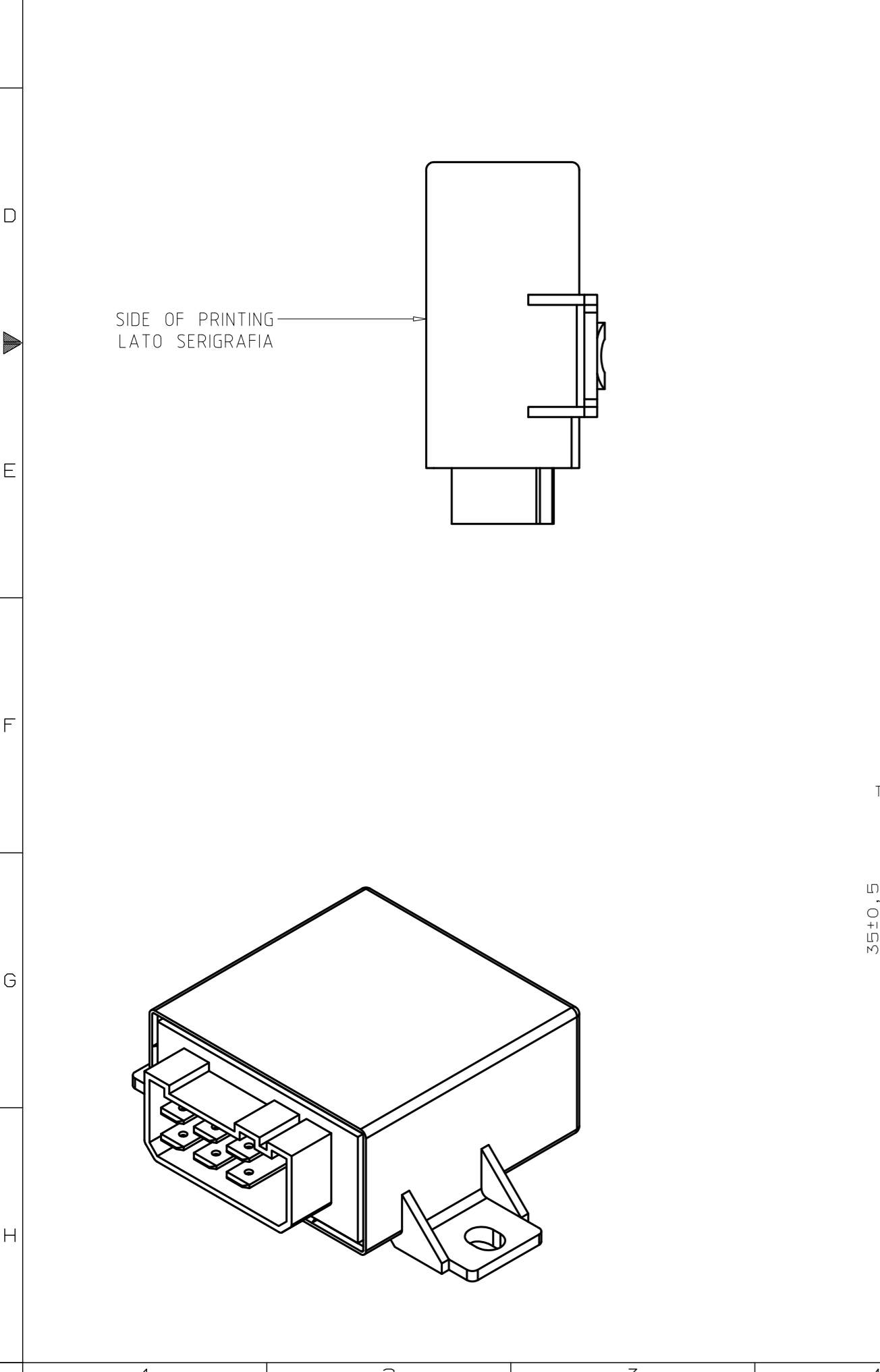


1	2	3	4	5	6	7	8	9	10	11	12
PART. NUMBER/ CODICE PRODOTTO	DESCRIPTION/ DESCRIZIONE	PRINTING/ SERIGRAFIA	<p style="text-align: center;">COMPATIBLE WITH BOOSTER I-LS. TO ALLOW FAILURE DETECTION ON THE LATEST DIRECTION INDICATOR LIGHTS ADOPTING LED TECHNOLOGY</p> <p style="text-align: center;">COMPATIBILE CON BOOSTER I-LS PER RILEVAZIONE GUASTO SU INDICATORI DI DIREZIONE CON TECNOLOGIA A LED</p>								
100.206.03.A1	FLASHER UNIT 6P 12V 3+1 X 21W W/DIAGNOSTIC - I-LS SUPPORT	<p>FLASHER UNIT 12V 3+1 (8) x 21W Made in Italy</p>  <p>COMPATIBLE WITH I-LS</p>									
100.206.04.A1	FLASHER UNIT 6P 24V 3+1 X 21W W/DIAGNOSTIC - I-LS SUPPORT	<p>FLASHER UNIT 24V 3+1 (8) x 21W Made in Italy</p>  <p>COMPATIBLE WITH I-LS</p>									

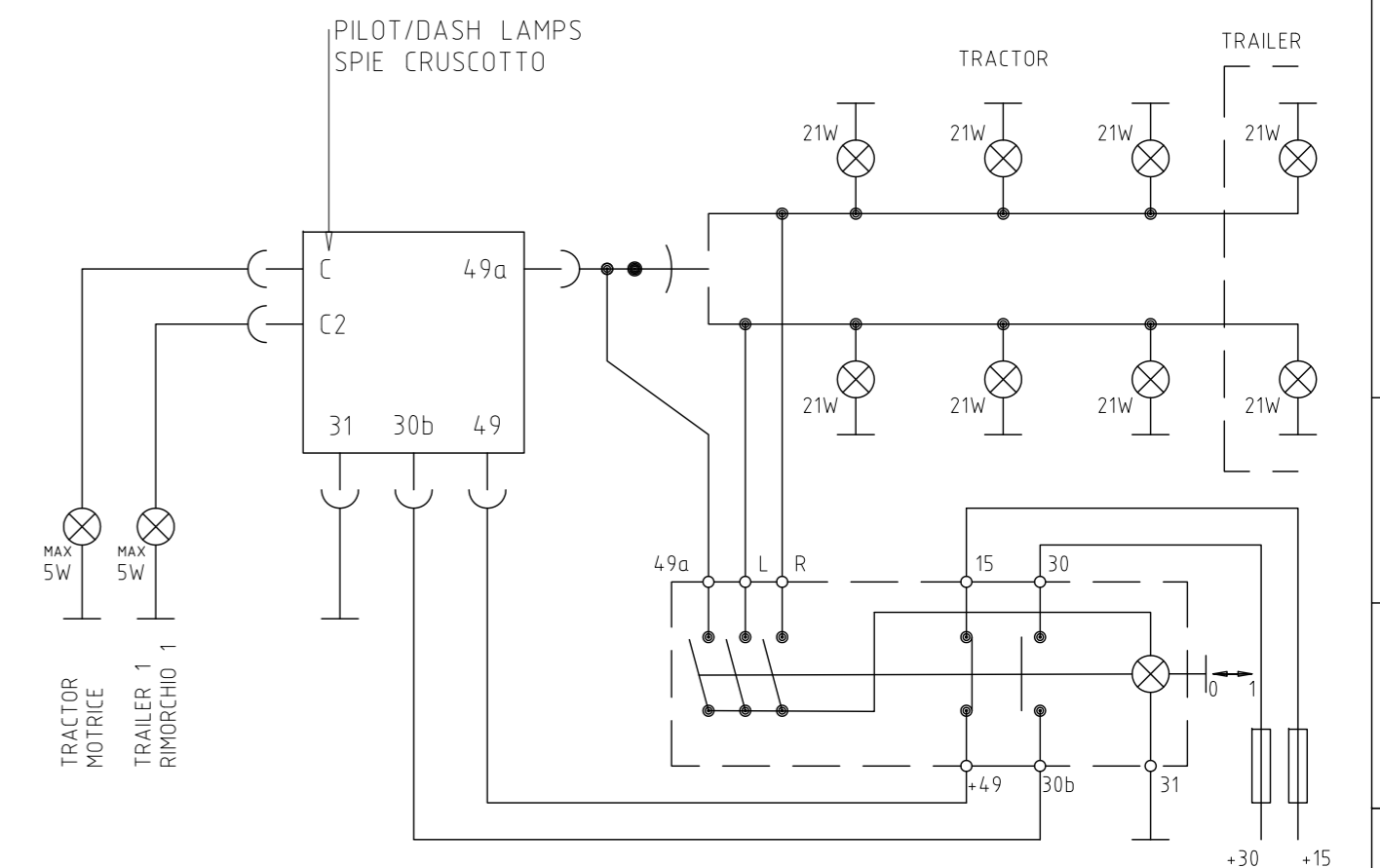
CHARACTERISTICS/ CARATTERISTICHE	100.206.03.A1	100.206.04.A1
RATED VOLTAGE TENSIONE NOMINALE	12V DC	24V DC
OPERATING VOLTAGE TENSIONE DI FUNZIONAMENTO	10V - 15V DC	20V - 30V DC
RATED LOAD CARICO NOMINALE	(3+1) x 21W	
RATED LOAD (HAZARD) CARICO NOMINALE (HAZARD)	8 x 21W	
OPERATING TEMPERATURE TEMPERATURA DI FUNZIONAMENTO	-40°C - +80°C	
RATED FLASHING FREQUENCY FREQUENZA DI LAMPEGGIO NOMINALE	80 ± 10 FPM	
FLASHING FREQUENCY UNDER FAILURE FREQUENZA DI LAMPEGGIO DURANTE GUASTO	140 ± 20 FPM	
ELECTRICAL LIFETIME DURATA ELETTRICA	TESTED FOR 200 HOURS AT RATED LOAD 15 SEC.ON/ 15 SEC.OFF AT 12VDC/ 24VDC TESTED 36 HOURS CONTINUOUS AT 8x21W	
MECHANICAL LIFETIME DURATA MECCANICA	1.000.000 OPERATIONS	
SUPPORTED LAMPS LAMPADIE SUPPORTATE	21W FILAMENT BULBS/ CLUSTER LED WITH I-LS	
IN CONFORMITY WITH IN CONFORMITA' CON	ECE R48 / ECE R10 (e24) / ISO 13207-1	
IP	IP 54	
INDICE PROTEZIONE	IP 54	


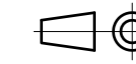


DA VERIFICARE FUNZIONAMENTO

FAILURE DETECTION / DIAGNOSTICA GUASTO	
FAILURE OF 1 LAMP GUASTO DI 1 LUCE	C2 PILOT LAMP OFF
FAILURE OF 2 LAMPS GUASTO DI 2 LUCI	C2 PILOT LAMP OFF - FLASHING FREQUENCY INCREASE TO 140±20 FPM

MATERIALS/ MATERIALI	
BASE BASETTA	PA 6,6 + 30% GLASS FIBER BLACK
HOUSING COPERCHIO	PA 6,6 + 30% GLASS FIBER BLACK
TERMINALS TERMINALI	Cu Zn Sn



		SCALE/SCALA: 1:1	MATERIALS/MATERIALI: SEE "MATERIALS"
DRAWN/DISEGNATO: M. NARDI	DATE/DATA: 03-06-14	TREATMENTS/TRATTAMENTI: SEE "MATERIALS"	
GENERAL TOLERANCE FOR LINEAR AND ANGULAR DIMENSIONS ACCORDING TO ISO 2768	CHECKED/CONTROLLATO: M. TESSARO	DATE/DATA: 03-06-14	INDX/ESP: 0
DESIGNATION/DENOMINAZIONE: FLASHER UNIT 6P 3+1		PART NUMBER/ DISEGNO NUMERO: 100.206.XX.A1	
BY TERMS OF LAW IS STRICTLY FORBIDDEN TO COPY OR TO COMMUNICATE TO THIRD THE CONTENT OF THIS DRAWING A TERMINI DI LEGGE E' RIGOROSAMENTE VIETATO RIPRODURRE O COMUNICARE A TERZI IL CONTENUTO DEL PRESENTE DISEGNO.			SIZE/FORMATO: A3
			SHEET/FOGLIO: 1/1

MODIFICATION DESCRIPTION/ DESCRIZIONE DELLA MODIFICA

DATE/ DATA
INDEX/ ESP

CAD